

AMICA

CREDIT MILLS

presents **THE ENCORE SERIES**



presents

**Etobicoke
Musical
Productions**

OCTOBER 2025 NOVEMBER

 **Meadowvale Theatre**

Ronald DeBeck DIRECTOR
Daniel Lalonde ASSISTANT DIRECTOR
Michael Grieco MUSIC DIRECTOR
Laura Moniz CHOREOGRAPHER
Monique Lackey PRODUCER
Karen Ann Johnson ASSISTANT PRODUCER
Ann DeNardis - Tomcko STAGE MANAGER

Beautiful

The Carole King Musical

BOOK BY

Doug McGrath

**Gerry Goffin
Carole King**

WORDS & MUSIC
BY

**Barry Mann
Cynthia Weil**

MUSIC BY ARRANGEMENT WITH

Sony Music Publishing

ORCHESTRATIONS, VOCAL & INCIDENTAL MUSIC ARRANGEMENTS

Steve Sidwell

ADDITIONAL MUSIC ARRANGEMENTS

Jason Howland

ORIGINALLY PRODUCED ON BROADWAY BY

Paul Blake

Sony Music Publishing

Mike Bosner

Beautiful: The Carole King Musical is presented through special arrangement
with Music Theatre International (MTI) > www.mtishows.com
All authorized performance materials are also supplied by MTI

PROUD SPONSOR *of*
THE ENCORE SERIES



Discover Exceptional Senior Living

AMICA

CREDIT MILLS

905-858-7777 • AMICA.CA/CREDITMILLS

Now Open: 2465 Eglinton Avenue West, Mississauga

INDEPENDENT LIVING ■ ASSISTED LIVING ■ MEMORY CARE

President's Message



Welcome to EMP's production of *Beautiful: The Carole King Musical*!

On behalf of Etobicoke Musical Productions and our incredible team of volunteers, thank you for joining us for this celebration of music, resilience, and the extraordinary life of one of the most prolific and beloved songwriters. Carole King's story is a reminder of how creativity, perseverance, and a little bit of heart can change the world—something we strive to reflect in every show we bring to the stage.

Producing a musical of this calibre takes countless hours, boundless energy, and unwavering passion—from our cast, crew, musicians, designers, and directors to the volunteers working behind the scenes. We're deeply grateful for their dedication. And we're especially thankful to you, our audience, whose continued support keeps community theatre alive and thriving.

Whether this is your first visit or your fiftieth, we hope EMP's *Beautiful* inspires you, moves you, and maybe even gets your toes tapping. That's the magic of live theatre, and we're honoured to share it with you.

Enjoy the show. You've got a friend in us.

Warmly,

Chris Pearson



CastleMoore Inc.

Investment Counselling & Portfolio Management

**Proud sponsor of the
Music Theatre Mississauga
Encore Series**



- Portfolio management for investors seeking absolute and conservative relative returns
- Offering income, balanced and growth mandates



- Low cost, fee-based service.
- **Ask about our senior's discount**



- Watch us on BNN Bloomberg's Market Call show



- **Contact Jeff Parent or Robert Sneddon at 647-405-8847**

www.castlemoore.com

7145 W. Credit Ave., Bldg 3, Suite 200A, Mississauga, ON L5N 6J7

Etobicoke Musical Productions

Board of Directors

President	Chris Pearson
Vice-President	Kati Pearson
Secretary	Janet Scinocca
Treasurer	Tony Laconte
Executive Producer	Ian Beckles
Technical Director	Martin Kuntze
Directors	Mandy Leon Helen Conway
Chief Financial Officer	Bob Cotton (<i>ex officio</i>)

MISSION STATEMENT

Etobicoke Musical Productions is a not-for-profit, community organization. We strive to provide our members with opportunities to perform, direct, choreograph, produce, and design quality musical theatre. In doing so, it is our mission to enrich the lives of our members and patrons by fostering a love of the performing arts, while providing an enjoyable and worthwhile experience.

PATRONS & SPONSORS of EMP

Our Patronage and Sponsorship Program enables you to support us financially by contributing at one of FOUR levels:

BRONZE - \$100 to \$249

SILVER - \$250 to \$499

GOLD - \$500 to \$999

PLATINUM - \$1000 or more

If you are interested personally or through your business in supporting quality community theatre, please contact Etobicoke Musical Productions: info@e-m-p.ca



**Etobicoke
Musical
Productions**

is a proud member of





FOREWORD

Ronald DeBeck

Director

Beautiful: The Carole King Musical

I am fortunate to have grown up in the 1960s and 1970s, a time when music profoundly shaped political and cultural values that continue to resonate today. Soul, R&B, and Folk gave a powerful voice to the Civil Rights Movement, while artists like John Lennon and Bob Dylan inspired anti-war and protest movements. Rock music fueled ideals of peace, love, and alternative lifestyles through the groundbreaking work of Jimi Hendrix and Janis Joplin.

Before 1971, Carole King was primarily a songwriter for artists such as Aretha Franklin, The Shirelles, and The Monkees. Her album *Tapestry* not only sold millions of copies—it transformed the music industry by making singer-songwriters central to popular music and touched listeners worldwide with its honesty and emotional depth. The album became symbolic of the early 1970s' focus on introspection, self-expression, and personal growth.

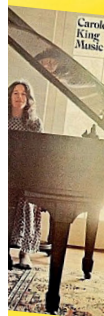
Beautiful: The Carole King Story offers a unique opportunity to explore the life behind the music. Trained in classical piano and influenced by composers such as Johann Sebastian Bach, King built a strong foundation in counterpoint, harmony, and structure, bringing sophistication and emotion to her pop songs. Along the way, she faced personal challenges and moments of doubt that shaped her journey, making her story as compelling as the music she created.

As you experience her songs tonight, listen for the honesty, the emotion, and the resilience woven into every note. Carole King's music continues to inspire generations, reminding us of the power of creativity, perseverance, and the human spirit.

Although we have faced our own challenges in bringing this production to life, the performers you see before you tonight—and the dedicated creative team behind the scenes—have risen above them with determination and grace. Together, they are polished, professional, and fully capable of stirring a wide range of emotions through music, movement, and storytelling.

Feel free to sing along when the spirit moves you, and ENJOY THE SHOW!!

Ronald DeBeck



THE ARTISTIC TEAM



Ronald DeBeck *Director*

Ronald began his directing career in 1985 in the U.S., embarking on a journey that has now spanned 40 years. Over the years, he has brought to life some of his favorite musicals, including *West Side Story*, *Jesus Christ Superstar*, *Into the Woods*, *A Funny Thing Happened on the Way to the Forum*, and *Les Misérables*. He has also had the privilege of playing beloved roles such as Harold Hill, Miles Gloriosus, and Jamie Lockhart.

Since moving to Canada, Ronald's performances have included Joseph Pulitzer in *Newsies*, Harry in *Mamma Mia!*, and Georg von Trapp in *The Sound of Music*. More recently, he directed *Kinky Boots* at the Rose Theatre in Brampton and *The School of Rock* with Etobicoke Musical Productions.

Currently, Ronald is completing his final year as a teacher in Peel and is excited to continue pursuing his passion for the arts in retirement. With *Beautiful* marking his second collaboration with EMP, he looks forward to many more productions in the years ahead.



Michael Grieco *Music Director*

Michael is happy to return to EMP as the music director for *Beautiful: The Carol King Musical*. Recent credits include: *Chicago* (Toronto Musical Productions) and *Tick, Tick... Boom!* (Whitby Courthouse Theatre). Previous music directing highlights over a span of 20 plus years include *City of Angels*, *Crazy For You*, *Anything Goes*, *42nd Street* (EMP), *Miss Saigon* (CCP), *The Who's TOMMY*, *The FULL Monty* (CCMP), *Into The Woods* (MMT). Since retiring from a busy 30 years of teaching music to middle school students in Toronto, Michael keeps himself engaged playing in the hip horn section as a longtime member of the popular GTA group the 'Blackboard Blues Band'. He also plays with various big bands, and symphonic groups and teaches trumpet privately. He wishes to thank his colleagues Ronald, Dan, and Laura for their wonderful work and camaraderie, and his band mates who make his job that much easier, and of course, a big thank you to the cast for their dedication to making the show a success. Love always to Squirt, Munchkin, and Marshmallow. Enjoy the show and we hope you find something beautiful!



THE ARTISTIC TEAM



Laura Moniz *Choreographer*

High school teacher and choreographer by day and dancing fool by night, Laura is thrilled to make her *Encore Series* choreography debut! Favourite past roles have included Diana in *A Chorus Line* (CMT), Ulla in *The Producers* (MMT), and Ilona in *She Loves Me* (Drury Lane).

Some of her proudest accomplishments have been her role as a choreographer for her wonderful students and their school musicals, including *Beauty and the Beast*, *The Addams Family*, *Newsies*, and *Little Shop of Horrors*. Huge thanks to this incredible cast and team, and love as ever to J3.



Daniel Lalonde *Assistant Director*

Daniel Lalonde is thrilled to be making his debut with EMP in this beautiful production that not only celebrates Carole King, but also the power of music. In his 21st (!) year teaching Drama in the Peel District School Board, Daniel is constantly inspired by the work of the superstars of tomorrow! Favourite directing credits include *RENT*, *Newsies*, *The Laramie Project*, and *In the Heights*. Daniel is excited to be collaborating once again with the fantastic duo of Ron and Laura, complemented by our veteran music director Michael Grieco.

ACKNOWLEDGEMENTS

Etobicoke Musical Productions gratefully acknowledges those individuals and organizations who have assisted with

Beautiful: The Carole King Musical

**City of Mississauga
Meadowvale Theatre Staff
Government of Ontario
Royal Canadian Legion Branch 643
Brampton Music Theatre
Garden City Productions
Penske Truck Leasing**

We also thank generous contributors who are not listed here.



CAST

IN ORDER OF APPEARANCE

Carole King ERIN CLOST
Genie Klein JANET HURLEY
Betty ANNA RAJAN
Neil Sedaka DEVIN FRANCE
Lucille SARA JOY
Don Kirshner PAUL BARKER
Bobby Vee BRIAN BERTOLISSIO
Gerry Goffin MICHAEL CLOST
The Drifters IAN BECKLES ROGER COLLINS
LEROY TURNER
Cynthia Weil LINDSEY ALSTON
Barry Mann KIERANS JORDAN
The Shirelles JANET AMIEL BETHANY CAMPBELL
KERRY-ANN INGRAM CHANTAL SORHAINDO
Janelle Woods KERRY-ANN INGRAM
Little Eva BETHANY CAMPBELL
The Righteous Brothers BRIAN BERTOLISSIO
DEVIN FRANCE
Nick DEVIN FRANCE
Marilyn Wald (*Dance Captain*) DANIELA SICILIA
Lou Adler KEVIN DUNNE

ENSEMBLE

CLARISSA HARTONO JAMIE HIGGINS
SARA JOY AMBYR POTTER ANNA RAJAN STEPHANIE SHERI
DANIELA SICILIA ANNALEE WESTON
MINA ZIVOJINOVIC

Beautiful: The Carole King Musical Orchestra

Michael Grieco

Conductor / Keyboard 2

Brandon Swann Keyboard 1 *Rehearsal Pianist*

Graziano Brescacin Reed 1 (Alto Saxophone, Alto Flute, Flute, Tenor Saxophone)

Brendan Cassidy Reed 2 (Baritone Saxophone, Clarinet, Flute, Tenor Saxophone)

Klaus Anselm Trumpet, Flugelhorn

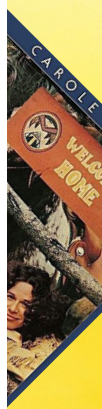
Dan Gargaro Tenor Trombone, Bass Trombone

David O'Hearn Guitar 1 (Electric, Nylon)

Kevin Little Guitar 2 (Electric, Acoustic, 12 String, Steel String)

Ed Franks Electric Bass, Acoustic Bass

Aaron Ferrera Drums, Percussion



PRODUCTION

Executive Producer	Ian Beckles
Producer	Monique Lackey
Assistant Producer	Karen Ann Johnson
Stage Manager	Ann DeNardis-Tomcko
Assistant Stage Managers	Ian Beckles Laura Gilmour-Hachey
Set Designer	Pascal Labillois
Set Construction Coordinator	Lawrence Gryniowski
Set Construction	Tony Barton Zona Beckles Andrew Forder Lawrence Hamilton Tom Hope David Linden
Scenic Painters	Charlotte Koo Rudo Mpisaungo
Lighting Designers	Mike Wheatstone Lindsay Murray
Lighting/Sound Designer	Martin Kuntze
Followspot Operator	Charlotte Koo
Costume & Props Designer	Margaret Gillis Karen Ann Johnson
Front of House Coordinator	Chris Pearson
FOH/Program Photographer	Andrew Forber
Graphic/Program Designer	Rob MacFarlane
Script/Rights Coordinator	Kevin Dunne
Membership/Ticket Manager	Janet Scinocca
Marketing/Publicity	Mandy Leon
Newsletter Editor	Kati Pearson
Financial	Bob Cotton

**ANY VIDEO AND/OR AUDIO RECORDING
OF THIS PRODUCTION
IS STRICTLY PROHIBITED.**

**PLEASE TURN OFF
ALL ELECTRONIC DEVICES
BEFORE THE SHOW BEGINS.**



MUSICAL

Overture Orchestra
So Far Away Carole King
Oh Carole Neil Sedaka

A 1650 Broadway Medley Ensemble
It Might as Well Rain Until September Carole King
Be-Bop-A-Lula Solo Singer (Ensemble)

C Some Kind of Wonderful Carole, Gerry Goffin, The Drifters
Happy Days are Here Again Cynthia Weill

T Take Good Care of My Baby Gerry, Carole
Who Put the Bomp Barry Mann
Will You Still Love Me Tomorrow The Shirelles
He's Sure the Boy I Love Cynthia, Barry
Will You Still Love Me Tomorrow The Shirelles
1 Up on the Roof The Drifters
On Broadway The Drifters

The Locomotion Little Eva, Ensemble
You've Lost That Lovin' Feeling Barry
The Righteous Brothers
One Fine Day Janelle, Ensemble
One Fine Day *Reprise* Janelle, Ensemble, Carole

INTERMISSION

Where You Lead/Entr'acte Orchestra
A Chains Carole, Ensemble
Walking in the Rain Barry, Cynthia

C Pleasant Valley Sunday Marilyn Wald, Gerry, Ensemble
We Gotta Get Out of This Place Barry
Will You Still Love Me Tomorrow *Reprise* Carole
T Uptown Uptown Singer, Back-up Singers
It's Too Late Carole
You've Got a Friend Carole, Cynthia, Barry, Don Kirshner
2 (You Make Me Feel Like) A Natural Woman Carole

Female Ensemble
Beautiful Carole, Company
I Feel the Earth Move Carole, Company, Orchestra



NUMBERS

Carole King. Colgems-EMI Music Inc. (ASCAP)

Neil Sedaka and Howard Greenfield. Screen Gems-EMI Music Inc. (BMI), and Universal/BMG (BMI)

Gerry Goffin and Carole King. Screen Gems-EMI Music Inc. (BMI)

Tex Davis and Gene Vincent. Sony/ATV Songs LLC (BMI),

and Three Wise Boys Music LLC (BMI)

Gerry Goffin and Carole King. Screen Gems-EMI Music Inc. (BMI)

Milton Ager and Jack Yellen. EMI Robbins Catalog Inc. (ASCAP),

Special lyrics by Douglas McGrath and Cynthia Weil

Gerry Goffin and Carole King. Screen Gems-EMI Music Inc. (BMI)

Barry Mann and Gerry Goffin. Screen Gems-EMI Music Inc. (BMI)

Gerry Goffin and Carole King. Screen Gems EMI Music Inc. (BMI)

Barry Mann and Cynthia Weil. Screen Gems-EMI Music Inc. (BMI)

Gerry Goffin and Carole King. Screen Gems EMI Music Inc. (BMI)

Gerry Goffin and Carole King. Screen Gems-EMI Music Inc. (BMI)

Barry Mann, Cynthia Weil, Jerry Leiber and Mike Stoller,

Screen Gems-EMI Music Inc. (BMI)

Gerry Goffin and Carole King. Screen Gems-EMI Music Inc. (BMI)

Barry Mann, Cynthia Weil and Phil Spector. Screen Gem-EMI Music Inc. (BMI),

EMI Blackwood Music Inc. obo Mother Bertha Music (BMI)

Gerry Goffin and Carole King. Screen Gems-EMI Music Inc. (BMI)

- 20 MINUTES

Gerry Goffin and Carole King. Screen Gems-EMI Music (BMI)

Barry Mann, Cynthia Weil and Phil Spector. Screen Gems-EMI Music Inc. (EMI)

Blackwood Music Inc. obo Mother Bertha Music (BMI)

Gerry Goffin and Carole King. Screen Gems-EMI Music Inc. (BMI)

Gerry Goffin and Carole King. Screen Gems EMI Music Inc. (BMI)

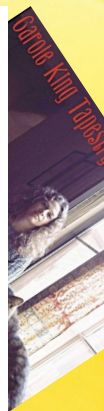
Carole King and Toni Stern. Colgems-EMI Music Inc. (ASCAP)

Carole King. Colgems-EMI Music Inc. (ASCAP)

Gerry Goffin, Carole King and Gerald Wexler. Screen Gems EMI Music Inc. (BMI)

Carole King. Colgems-EMI Music Inc. (ASCAP)

Carole King (Lou Adler). A&M Records (Screen Gems/Columbia Music, Inc. (BMI)



CAST



Lindsey Alston *Cynthia Weil*

Beautiful returns Lindsey to theatre after a 15-year sabbatical in the 'real world'. Previously, she acted, produced, designed, and crewed in theatre, cabaret, and one rather explosive stunt spectacular. Thanks: Dad for adding 'You've Got a Friend' to the mixed tapes; Mom for 'Gilmore Girls' Thursday nights, and, Cynthia for never waiting for anyone else to open a door.



Janet Amiel *The Shirelles*

Janet is excited to perform in *Beautiful*, for the second time. Janet started out as a backstage mom repairing costumes for her daughter's performances. Since then, she has done: staging/set dressing, prop creation, and performing. Past shows include: *Beautiful*, *Oz*, *Joseph*, *Kinky Boots*, and *Mamma Mia*. Janet thanks her family and friends for always supporting and encouraging her.



Paul Barker *Don Kirshner*

Paul celebrates 45 years in community theatre with *Beautiful*, his debut with EMP, and he is thrilled to play the role of music producer Don Kirshner. Paul's favourite roles include Cogsworth in *Beauty and the Beast*, Caiaphas in *Jesus Christ Superstar*, and Barricade corpse #37 in *Les Misérables* (all with Brampton Music Theatre). He thanks Catherine, Laurelle, and John for letting him enjoy his creative outlet.



Ian Beckles *The Drifters*

Ian is happy to be back on stage for this year's EMP production. Ian has been involved with EMP since 2004, and he has taken on many roles on and off the stage. Ian would like to thank his family for their support over the years. Enjoy the show.



Brian Bertolissio *The Righteous Brothers/Bobby Vee*

Brian started his community arts journey with Glee Social Club in 2024. After performing with them for two seasons, he is ready to take the theatre stage for the first time. Brian wants to thank his vocal coach, Shavini Fernando, and his partner, Kevin, for pushing him to start this journey.



Bethany Campbell *Little Eva/The Shirelles*

Bethany has grown up singing and is excited to do her first musical with EMP. She's led choirs, taught vocal lessons, loaned her voice to several bands, and most recently, she performed with Glee Social Club. Bethany is deeply grateful to Chris, Kenny, and Hugo for their constant love and support. Choo choo now y'all!

CAST



Erin Clost *Carole King*

Erin is thrilled to be cast as Carole King in EMP's production of *Beautiful*. Many thanks to her friends and family for their continued support of her passion for the Arts. She especially wants to thank her husband, Michael, whom she is excited to share the stage with, for his love and encouragement. This one's for you, DG.



Michael Clost *Gerry Coffin*

Michael is very excited to be back on the Meadowvale Theatre stage, portraying Gerry Goffin in *Beautiful*. He's grateful to his friends and family for their support, and most importantly to Erin, with whom he is thrilled to share the stage again.



Roger Collins *The Drifters*

Roger is excited to join the EMP cast of *Beautiful: The Carol King Musical* as a Drifter. Being part of the artistic community again brings back fond memories! Roger has performed on stage many times as a singer and musician, playing all over the GTA. Being involved and in performance have always fueled his passion for the Arts.



Kevin Dunne *Lou Adler*

Kevin is about as happy as a person can be, being able to get back on stage after a long break. He would like to remind everyone to do what they love as if it will be the last time they do it, cause one day it will be. So sing along if you want to and enjoy the show!



Devin France *Neil Sedaka / The Righteous Brothers / Nick*

Devin is ecstatic to make his EMP debut! Previous credits include: Georg in *Spring Awakening*, Cinderella's Prince/Wolf in *Into the Woods*, Brad in *Rocky Horror*, Melvin/Toxie in *Toxic Avenger*. Devin would like to thank his family Sandra, Eric, Danielle, Breanne, Piggy, Marissa, Letty, and Nessa. Special thanks to Tom Oliver at Voice Concepts.



Clarissa Hartono *Ensemble*

Clarissa Hartono is thrilled to make her musical theatre debut in *Beautiful: The Carole King Musical*, one of her favourite shows. A figure skater and theatre enthusiast, she thanks her vocal coaches, family, and friends for their support, as she skates her way from the rink to the stage.

CAST



Jamie Higgins *Ensemble*

Jamie is thrilled to be returning to EMP, after rocking out last year in *School of Rock*. Previous shows with EMP: *Christmas Carol, The Musical, The Producers, Oliver!, Jesus Christ Superstar, and Guys and Dolls*. He is also a member of the Grace Church on-the-Hill Choir. Jamie would like to dedicate his performance to his dad who inspired his love of musicals.



Janet Hurley *Genie Klein*

Janet is grateful to play the sharp-tongued, fiercely protective and deeply loving Genie, the kind of mom every girl deserves in her corner. Thanks to the artistic team and cast of this *Beautiful* journey, Janet's second show with EMP - *South Pacific* was her debut. Other credits include: *Shadows in the Nook* (Alumnae Theatre), *Anastasia, Parade, Chicago* (Wavestage), *Chitty Chitty Bang Bang, Curtains* (Theatre Unlimited).



Kerry-Ann Ingram *Janelle Woods/The Shirelles*

I went searching for joy, and—voilà!—EMP appeared like magic. Endless gratitude to my great-grandma, grandpa, and mentor Garth (epic *Canadian Idol* campouts!) for cheering on my dream and urging me to sing loud and proud. With Michael's brilliant musical direction and the entire EMP team's amazing creativity, I'm grateful, giddy, and ready to belt my heart out for the show's entire run!



Kierans Jordan *Barry Mann*

Kierans Jordan is thrilled to be back with EMP for this outstanding production. Past credits include Rocky (*The Rocky Horror Picture Show*) Riff Raff (*Rocky Horror*) Luthor Rosser (*Parade*) Perchik (*Fiddler on the Roof*) Lt. Cable (*South Pacific*) Stanley (*Holiday Inn*) Scuttle (*Little Mermaid*).



Sara Joy *Lucille/Ensemble*

Sara Joy caught the theatre bug early in life, often reenacting musicals for babysitters or forcing her siblings to take part in original plays. It came as no surprise that she became a music teacher and she is thrilled to be part of this wonderful cast singing the incredible music of Carole King!



Ambyr Potter *Ensemble*

Ambyr is thrilled to be a part of the cast of *Beautiful: The Carole King Musical*. Her past credits include Ensemble in *School of Rock* (EMP, Nov 2024) and Ensemble in *All Shook Up* (Spotlight Musical Productions, May 2024). She would like to thank Tucker for all his endless love and support as she pursues her passion for theatre.

CAST



Anna Rajan *Betty/Ensemble*

Anna is a third-year Music Therapy student at Wilfrid Laurier University. Her love of musicals began at a young age with *The Sound of Music* (thanks, Grandpa!), and it recently blossomed through performing with Laurier's VOX ensemble. This is her first-ever theatre production and she's grateful to share the stage with such a talented cast.



Stephanie Sheri *Ensemble*

Stephanie Sheri was part of the musical theatre community while studying vocal jazz at Humber College, and she's thrilled to be back! A lifelong performer and former voice/piano teacher for 25 years, she's kept her love of the arts alive through long-form musical improv, choirs, and writing. She's excited to blend it all on stage with EMP this season!



Daniela Sicilia *Marilyn Wald/Ensemble (Dance Captain)*

Daniela is very excited to be a part of EMP's *Beautiful: The Carole King Musical*. This is Daniela's second show within the *Encore Series* and first show with Etobicoke. She is a graduate of Randolph College of the Performing Arts: Triple Threat Program. She thanks her family and friends for the endless support and love throughout her journey as a performer.



Chantal Sorhaindo *The Shirelles*

Chantal Sorhaindo is making her community theatre debut with Etobicoke Musical Productions. Her previous musical experience includes years of choir, small band vocals, and, of course, Karaoke. She thanks her parents for forcing her to stick with Royal Conservatory piano lessons and she is so grateful to EMP for this wonderful opportunity.



Leroy Turner *The Drifters*

Singing and recording these timeless songs have always been a passion of Leroy's. He is new to theatre and being on stage, yet he hopes to bring a little something to *Beautiful*. Carole's songs have been recorded by all walks of life, and Leroy is honoured to perform these songs before a Meadowvale audience. Some of his studio recordings include *Maria*, *Maria* and *I Believe in Music*.



Annalee Weston *Ensemble*

Annalee is thrilled to be performing in the ensemble in EMP's *Beautiful*. Annalee has performed in many productions, including her favourites: Lady Clapham in *Something Rotten*, Sister Bertha in *The Sound of Music*, an enchanted plate in *Beauty and the Beast*, a Granny Smith Apple Tree in *Wizard of Oz*. A special thanks to her family for always being supportive.

CAST



Mina Zivojinovic *Ensemble*

Mina's on stage performances include: Audrey 2 in *Little Shop of Horrors*, Penelope in *Urinetown*, and Ariel in *The Little Mermaid* with Avenue Road Arts School Musical Theatre Company. A graduate of Rosedale Heights School of the Arts, she thanks her parents for their endless encouragement and support.

The Tom MacFarlane Memorial Scholarship

The **Tom MacFarlane Memorial Scholarship** is awarded to an **Etobicoke area** student in their graduating year of High School. Students who are eligible for this **\$1,000 scholarship** will have committed themselves to post-secondary education in the performing arts (music, dance, drama, or production)



SCHOLARSHIP UPDATES & DEADLINES TO APPLY: www.e-m-p.ca

SISTER ACT

Fall 2026



www.e-m-p.ca

www.encoreseries.ca

PRODUCTION



Ian Beckles Executive Producer

2025 has Ian in his 21st year of involvement with EMP, happy to be on stage for *Beautiful*, besides his usual role(s) behind the scenes. Not a stranger to multitasking, he has been a producer, an assistant stage manager, and a set builder, often all in one show. A huge thanks to his family for supporting him all along the way. Enjoy the show!



Monique Lackey Producer

Monique is excited to produce her second show with EMP. An elementary educator, she believes theatre unites, uplifts, and sparks lifelong passion. She previously produced EMP's *School of Rock* and has directed many elementary school performances of Disney Jr. musicals. Monique thanks her family for their support and understanding of the time she dedicates to the stage.



Karen Ann Johnson Assistant Producer

Karen Ann is happy to be joining the EMP Team as Assistant Producer. Prior to this, she spent 10 years as Chair of the Arts Committee at St. Michael's College School, involved in all aspects of their musical, drama, and concert productions. She credits and thanks her 'musical theater kid' Rocky for getting her hooked on volunteering with the performing arts!



Ann DeNardis-Tomcko Stage Manager

This is Ann's 7th production with EMP. Some Stage Management credits include: *Oliver!* (Theatre Unlimited, 2025), *School of Rock* (EMP, 2024), *Mamma Mia* (Theatre Unlimited, 2024). She is ever grateful to Laura and Ian for being so good at their jobs. Thank you to her husband Mike for supporting her love of live musical theatre. She lovingly dedicates this show to her Papa.



Pascal Labillois Set Designer

Pascal is an ACT-CO award winner and Broadway Award-nominated set designer, scenic artist, and virtual production designer. He has collaborated with Drayton Entertainment, Mirvish, and theatre groups across Southern Ontario on shows including *Mary Poppins*, *Les Misérables*, *Tuesdays with Morrie*, and more. Pascal thanks his husband for his ongoing love and support.



Lawrence Gryniewski Set Construction Coordinator

Lawrence is thrilled to be working again with EMP's talented cast and production team for *Beautiful*. He has enjoyed helping construct sets for the last 9 shows with EMP, and he holds his son Nicholas responsible for pulling him into this marvellous community. Many thanks to all those who helped build this fabulous set. Enjoy the show!



Martin Kuntze Sound Design/Lighting

Martin will be upstairs at Meadowale for his 63rd show with EMP, when *Beautiful* goes up! An occasional designer for other groups, his heart remains with Etobicoke, where his community theatre journey began. Forever thankful to Meadowvale Theatre staff for ongoing invaluable technical collaboration.

PRODUCTION



Mike Wheatstone Lighting Designer

Mike has very much enjoyed doing the lighting design for EMP over many years. Mike is joined again by Lindsay Murray in designing this show. We had a blast working together on *School of Rock* and we hope to recreate the magic with *Beautiful*. Thanks also to the Meadowvale technical team, who always help us transition creative ideas on paper to the stage.



Lindsay Murray Lighting Designer

Having recently stepped into theatre lighting from a film background, Lindsay brings a love for storytelling through light. She is thrilled to be part of *Beautiful: The Carole King Musical* and feels honoured to learn and create with this talented team. Recent credits include *School of Rock* and *Oliver!*.



Margaret Gillis Costume & Props Designer

Margaret is doing double-duty for *Beautiful: The Carol King Musical*, in her eleventh year with EMP. Active professionally for many years as a prop and set stylist for commercial film and photography, Margaret loves her work so much that volunteering in community theatre is a natural segue. Eternal thanks to her daughter and son-in-law for keeping everything at home intact!



Rob MacFarlane Graphic/Program Designer

Beautiful: The Carole King Musical has been another wonderful opportunity to support EMP behind the scenes. Rob was fortunate recently to come out from the shadows to act in *Arsenic and Old Lace* (Calliope Sound Productions). KUDOS to our photographer for *Beautiful*, Andrew, whose talent and dedication have made everyone look really good!



Andrew Forber Photographer

Andrew has done photography (among other things) for four *Encore Series* productions so far, and he believes that if “There’s No Business Like Show Business”, it’s because “There’s No People Like Show People”: they’re consistently passionate, joyful, and kind. It’s a pleasure to work with such talented cast and crew, and to help them entertain you all.



Mandy Leon Marketing Coordinator

First appearing on stage with EMP in the 1997 production of *Fiddler on the Roof*, Mandy has been involved in various aspects of EMP over many years. On stage and behind the scenes, she continues as both a long-standing member of the Board and as the group’s mar/com ‘go to’.



Janet Scinocca EMP Membership/Ticket Sales

Supporting EMP as Secretary of its Board, Janet continues to supervise EMP Membership and liaise with the Meadowvale Theatre box office regarding ticket sales. She’s passionate about how an EMP membership (and volunteering) supports local community theatre in so many ways. Enjoy the show!

MISSISSAUGA CHAMBER SINGERS

MERVIN W FICK - CONDUCTOR

Christmas Joy

Saturday , December 6, 7:30pm

Christ First United Church

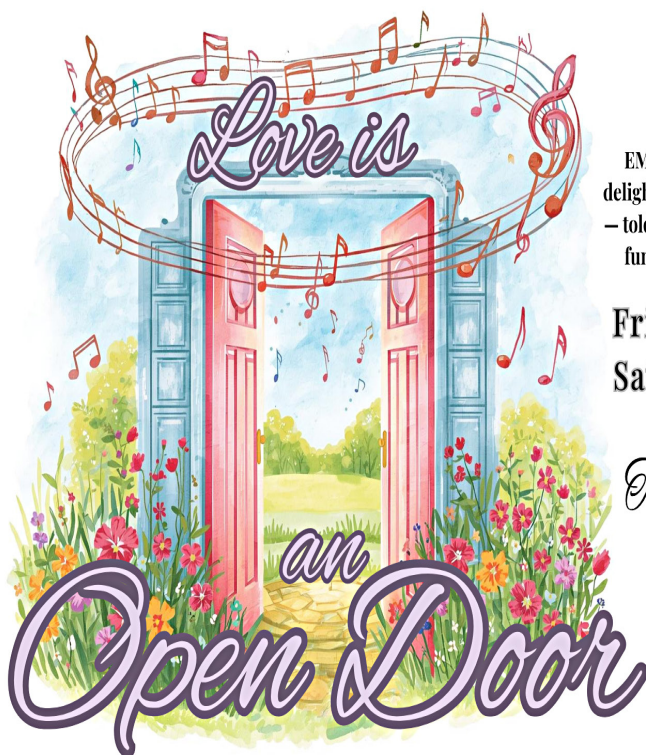
151 Lakeshore Rd. West, Mississauga



MISSISSAUGA



WWW.MCSINGERS.CA



EMP invites you to experience the drama, delight, and downright unpredictability of love – told through songs that capture its sweetest, funniest, and most unexpected moments.

Friday April 10, 7:00 pm

Saturday, April 11, 2pm*

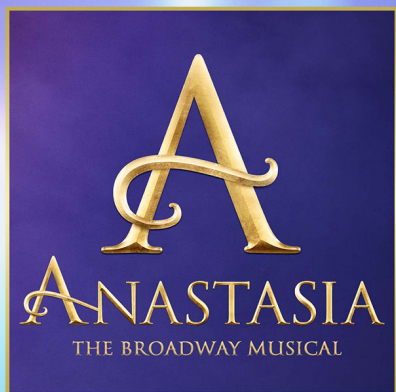
The Assembly Hall

1 Colonel Samuel Smith Park Dr,
Etobicoke

*Join Etobicoke Musical Productions after the performance for a special reception celebrating 60 years of producing quality community theatre in the GTA!

THE ENCORE SERIES - 2025-2026 SEASON

DON'T MISS THE OTHER AMAZING SHOWS
THIS SEASON HAS TO OFFER!



the
PROM

Annie

©2017 Tribune Content Agency, LLC



ORDER TICKETS AT: WWW.ENCORETIX.CA
OR CALL 905.615.4720